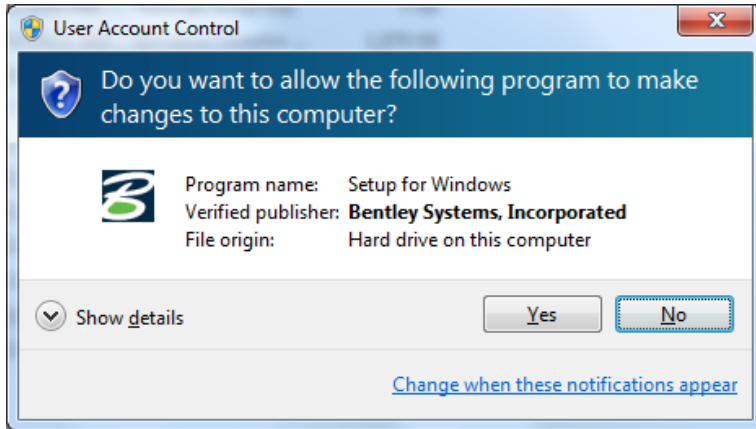
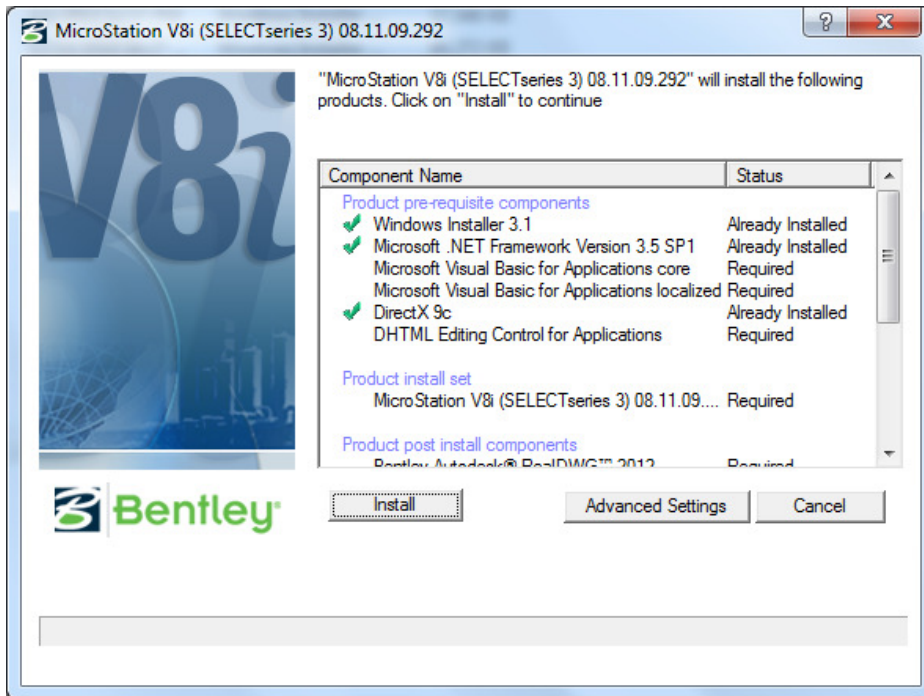


Make sure that your computer is connected to the internet because some parts of the installation files should be downloaded from the Bentley website.

Click **Setup** icon

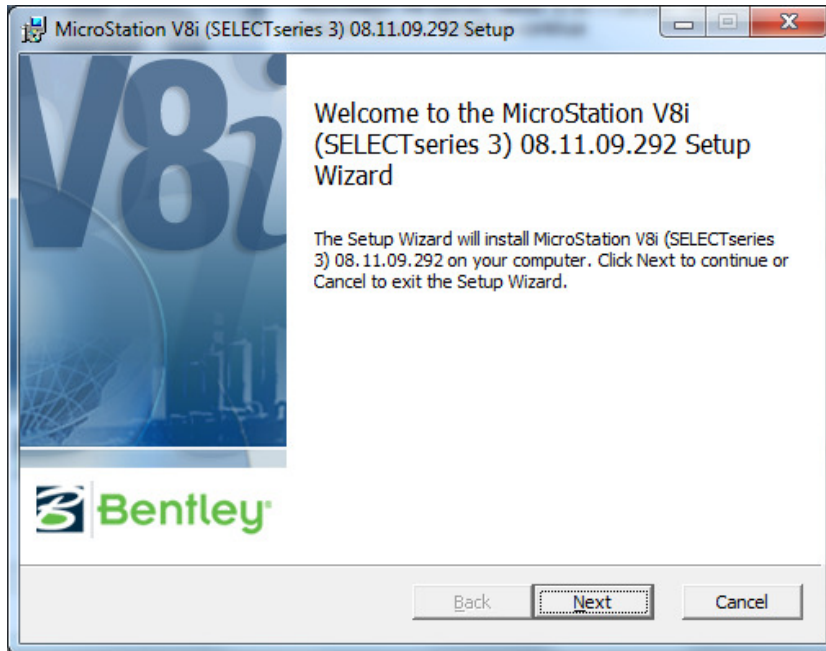


Click **Yes**

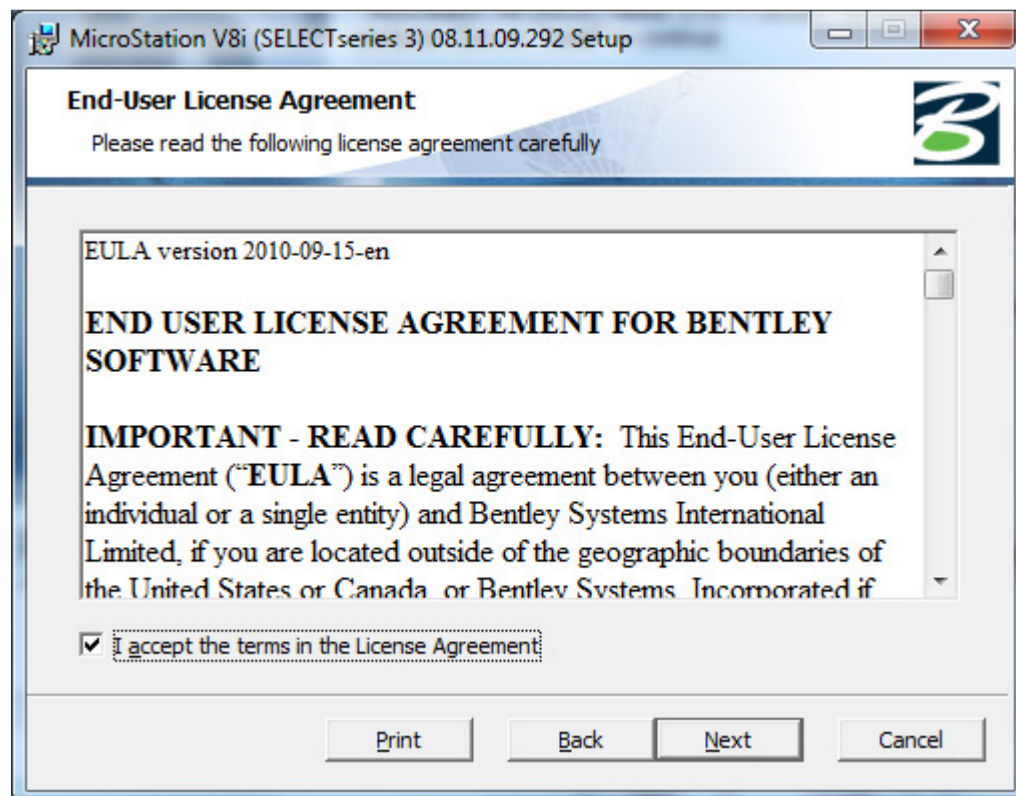


Click **Install**

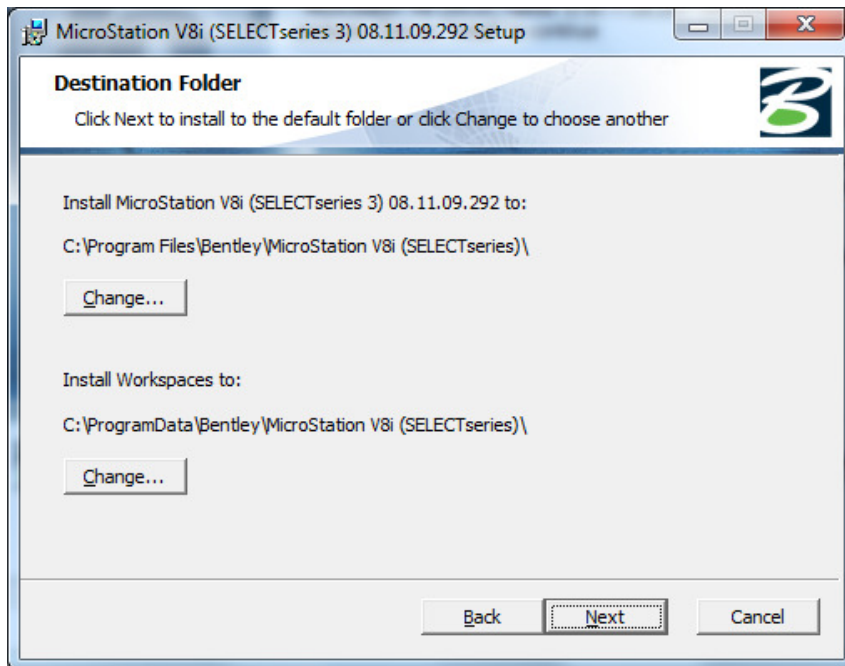
This may take sometimes since some part of the components will be downloaded from Bentley website



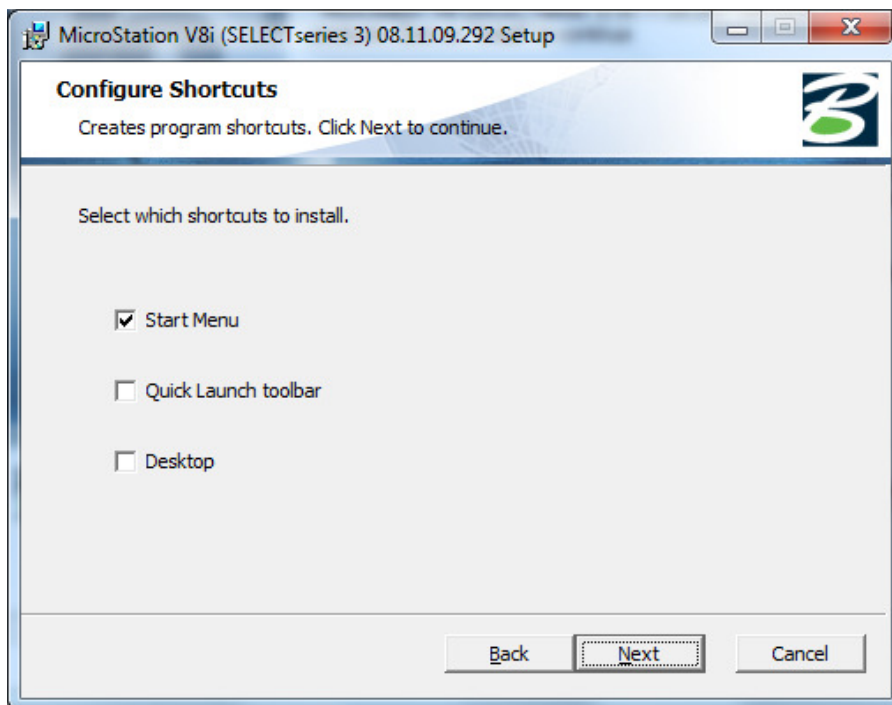
Click **Next**



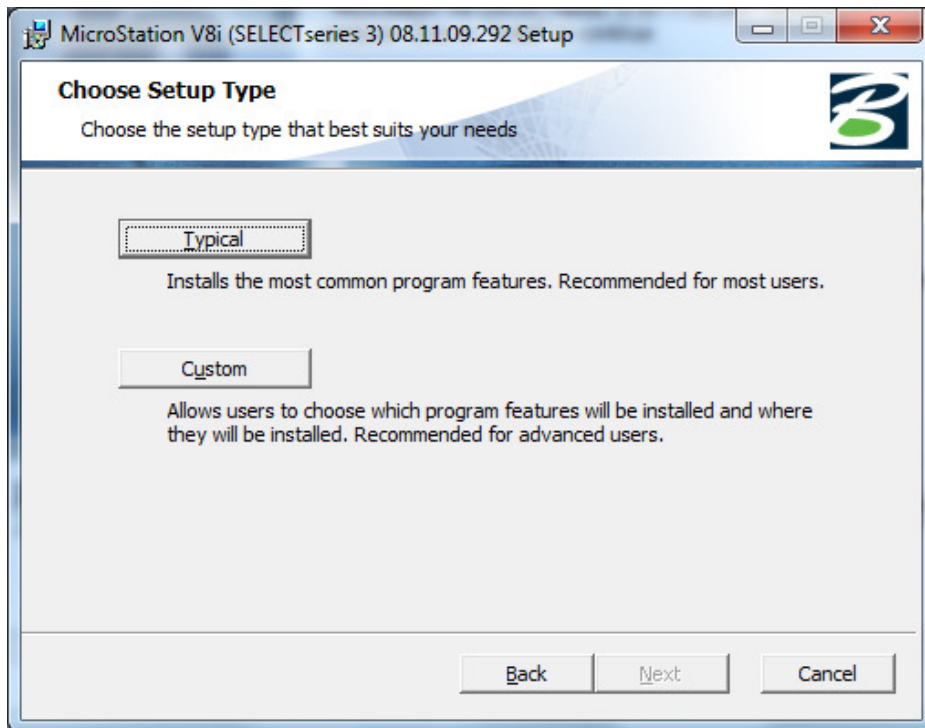
Tick **I accept the terms in the license agreement** and click **Next**



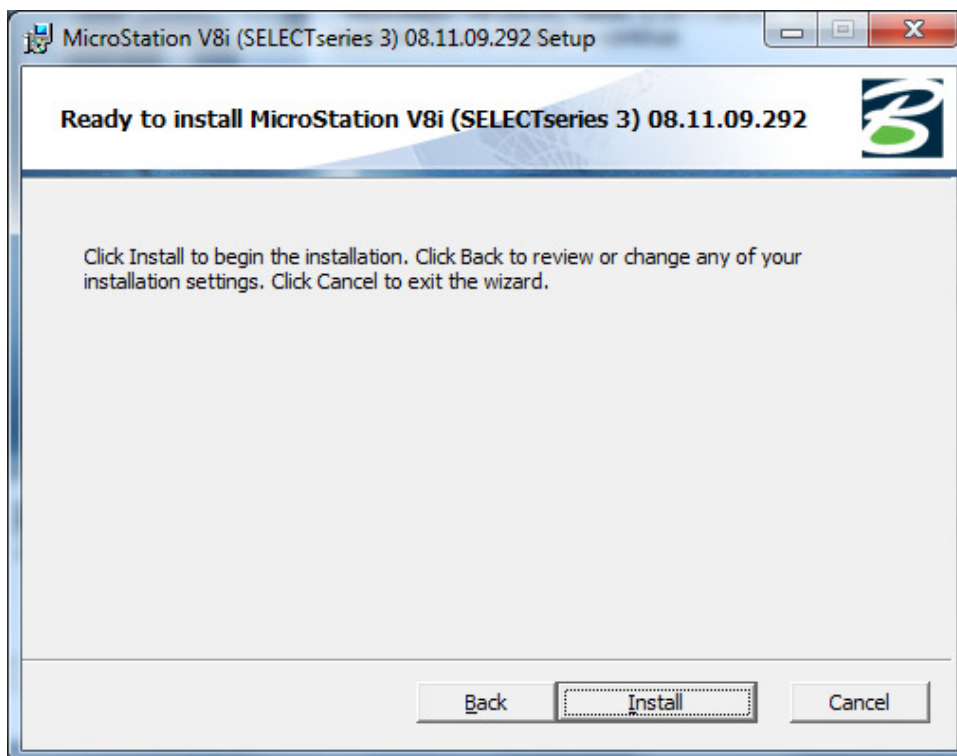
Click **Next** to install the software in a default folder



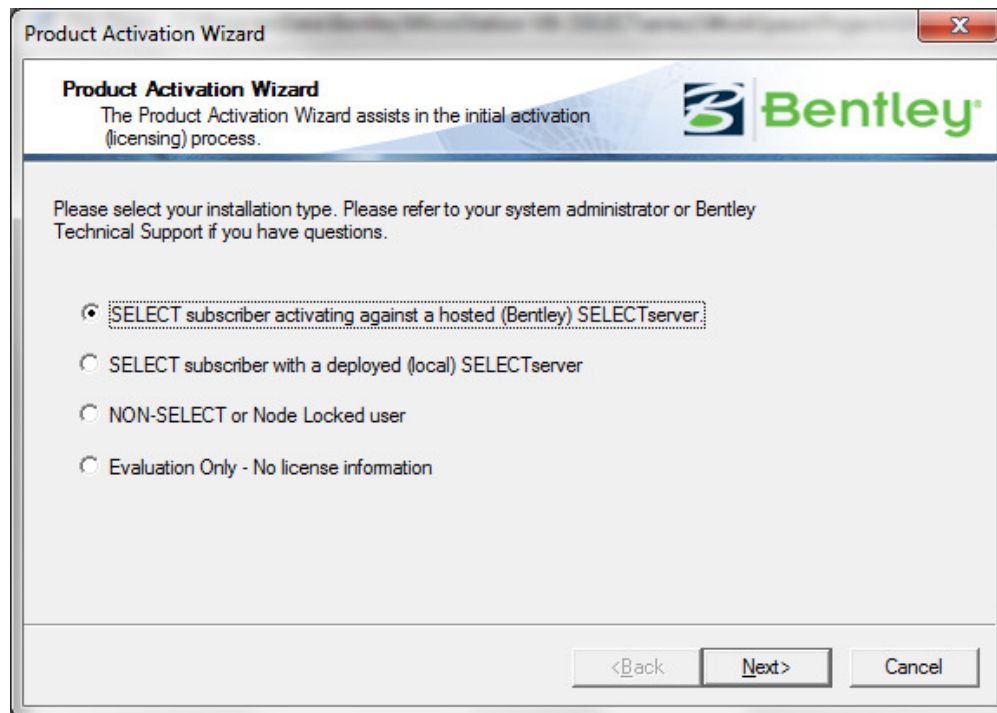
Click **Next**



Click **Typical** installation



Click **Install**



Choose **SELECT subscriber activating against a hosted (Bentley) SELECT server**, click **Next** and enter the following code:

Activation key: E033506075201CF18A40005056A1720F